

Making Space: social practices, participatory and creative approaches

Claire Collins, Sam Duncan, Tara Furlong, Graham Griffiths and Linda Ulrich
Impact and Innovation
UCL IoE, 9th November 2017



History of social practices roots in adult literacies and community learning

This generated a strong academic base and progressed 'integrated, embedded, contextualised learning' in FE.

Autonomous v. ideological models analyse what works, or the hegemonies, in any *situated* learning experience or wider context.

What are the challenges in the UK now? Where is research and practice in adult literacies andragogy in the UK now?

Social practices in educators' professional learning communities

Some post-compulsory education sub-sectors are shrinking, others expanding.

In addition, current challenges might range across a demographic drop in educator specialism; apprenticeships, TVET and higher level learning; applied and higher order literacies curricula - where is adult literacies andragogy in this?

How do we make sense of the challenges and opportunities?

RaPAL

RaPAL offers a national flexible professional learning community of ongoing CPD and peer review in literacies andragogy. This includes a termly educator-generated digital journal, annual events and a participatory, flexible- and remote- working editorial and management board.

Odd one out



metre



second



inch

Images from all-free-download.com

Studies on mathematics in context



**Nunes et al Street maths
and school maths**



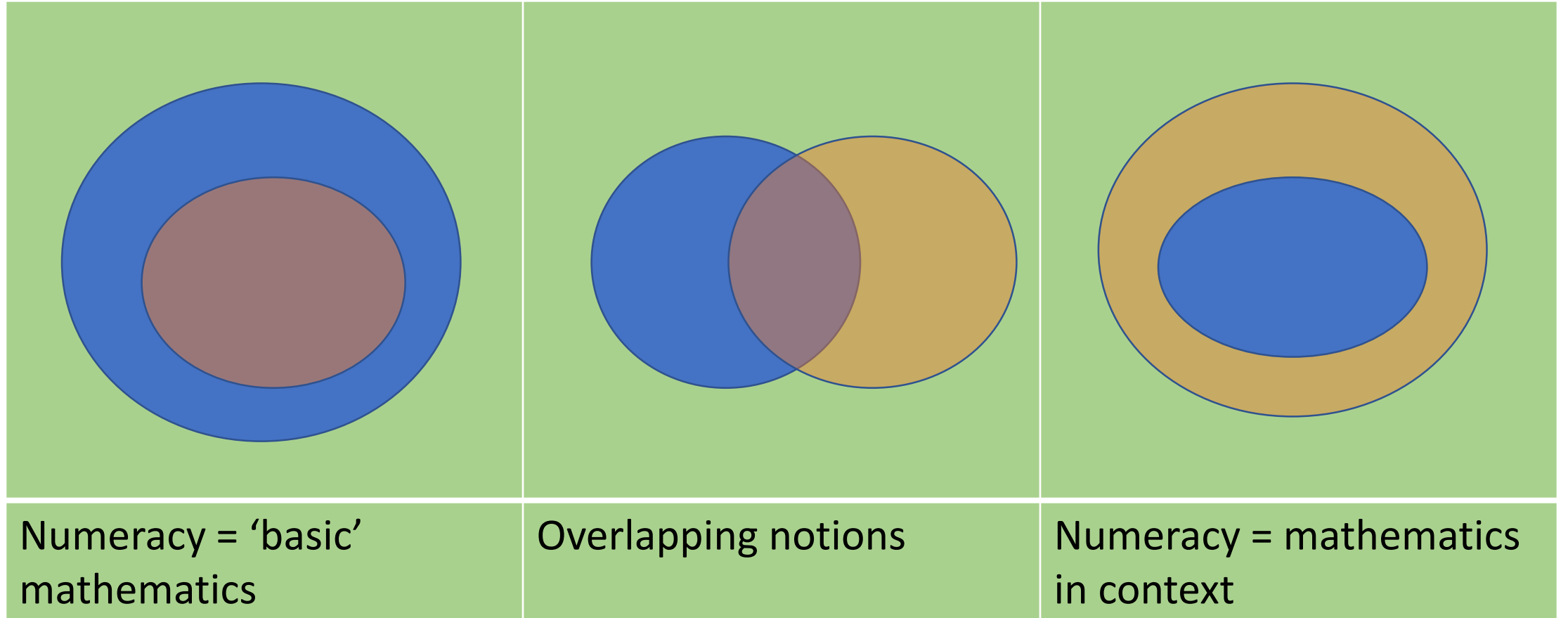
**Lave et al Grocery
shopping**



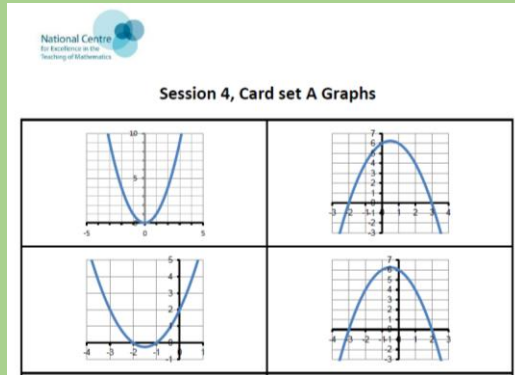
Hoyles et al Nurses

Images from all-free-download.com

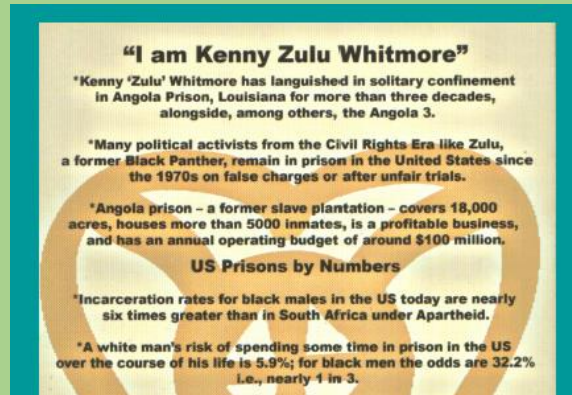
Mathematics vs numeracy



Teaching approaches



Collaborative learning



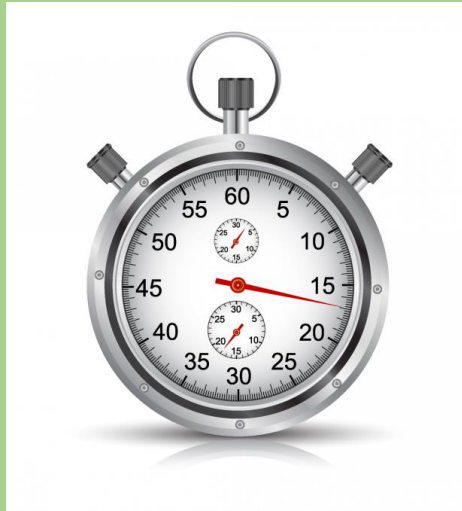
Critical math literacy



Bring your dream kitchen to life using our virtual kitchen planner.

Ethnomaths & context

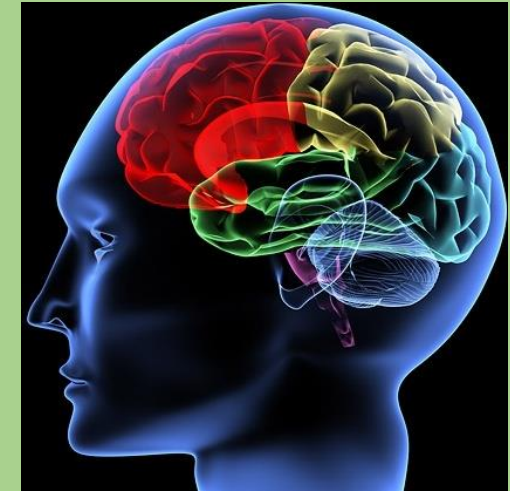
Concerns about employing approaches



Time



Expectations



Knowledge

But given the data can we afford not to?